



TRACY  
GROUP

Home Building & Remodeling  
"Since 1974"

Dover

1271 Square Foot



ELEVATION A

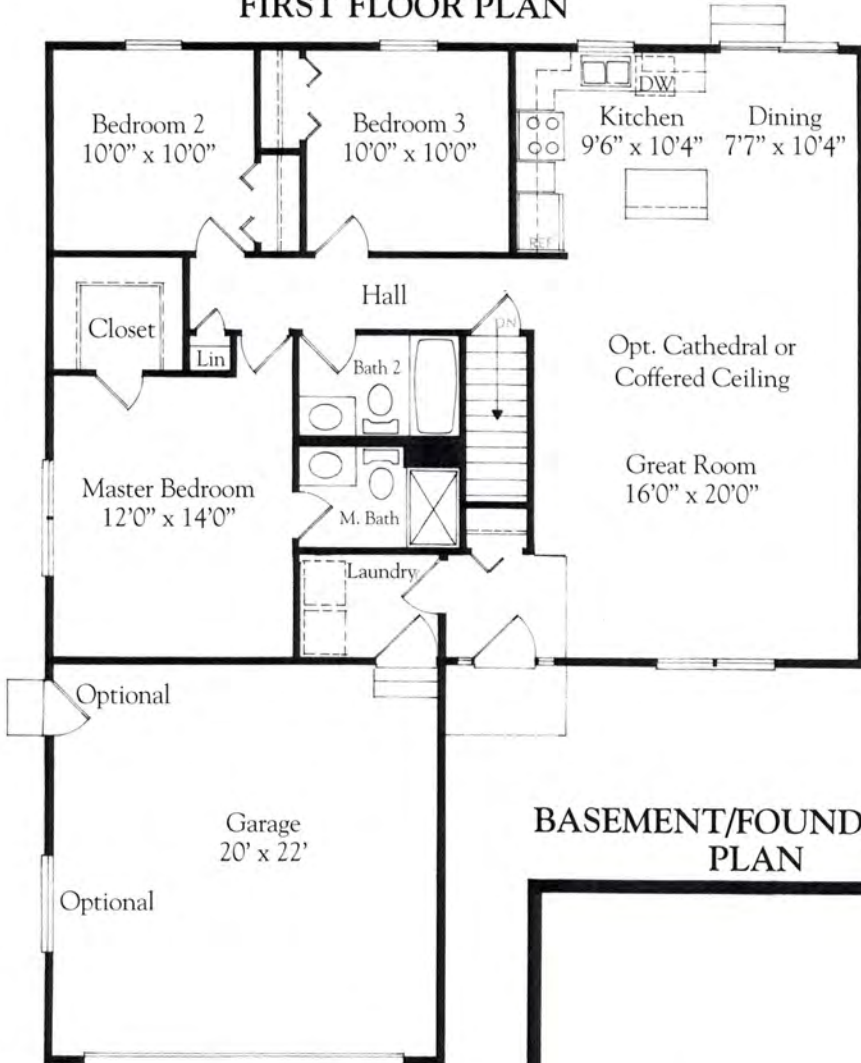


ELEVATION B

Illustrations of the homes and landscaping are artist's conceptions

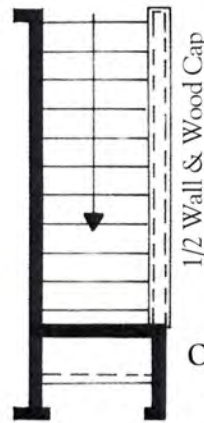
Home Building & Remodeling  
"Since 1974"

**FIRST FLOOR PLAN**

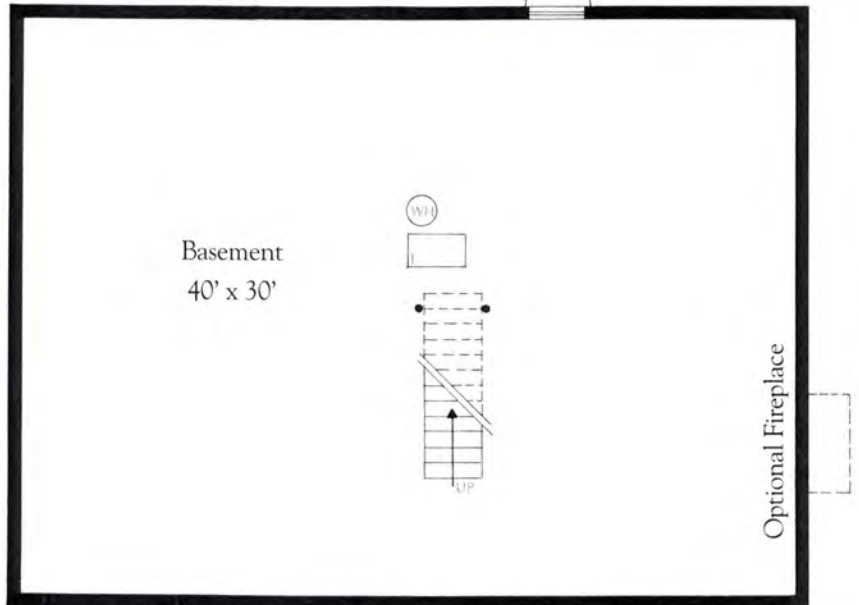


**FIREPLACE & WINDOWS OPTION**

Great Room



**BASEMENT/FOUNDATION PLAN**



Tracy Group's policy of optional attention to detail in design and construction, requires that some revisions may be made by the architect or developer during the process of development. All dimensions are approximate, window sizes and location varies with exterior design and specification. Dimensions and pricing are subject to change without notice.





TRACY  
GROUP

Home Building & Remodeling  
"Since 1974"

Hampton

1245 Square Foot



ELEVATION A



ELEVATION B

*Illustrations of the homes and landscaping are artist's conceptions*

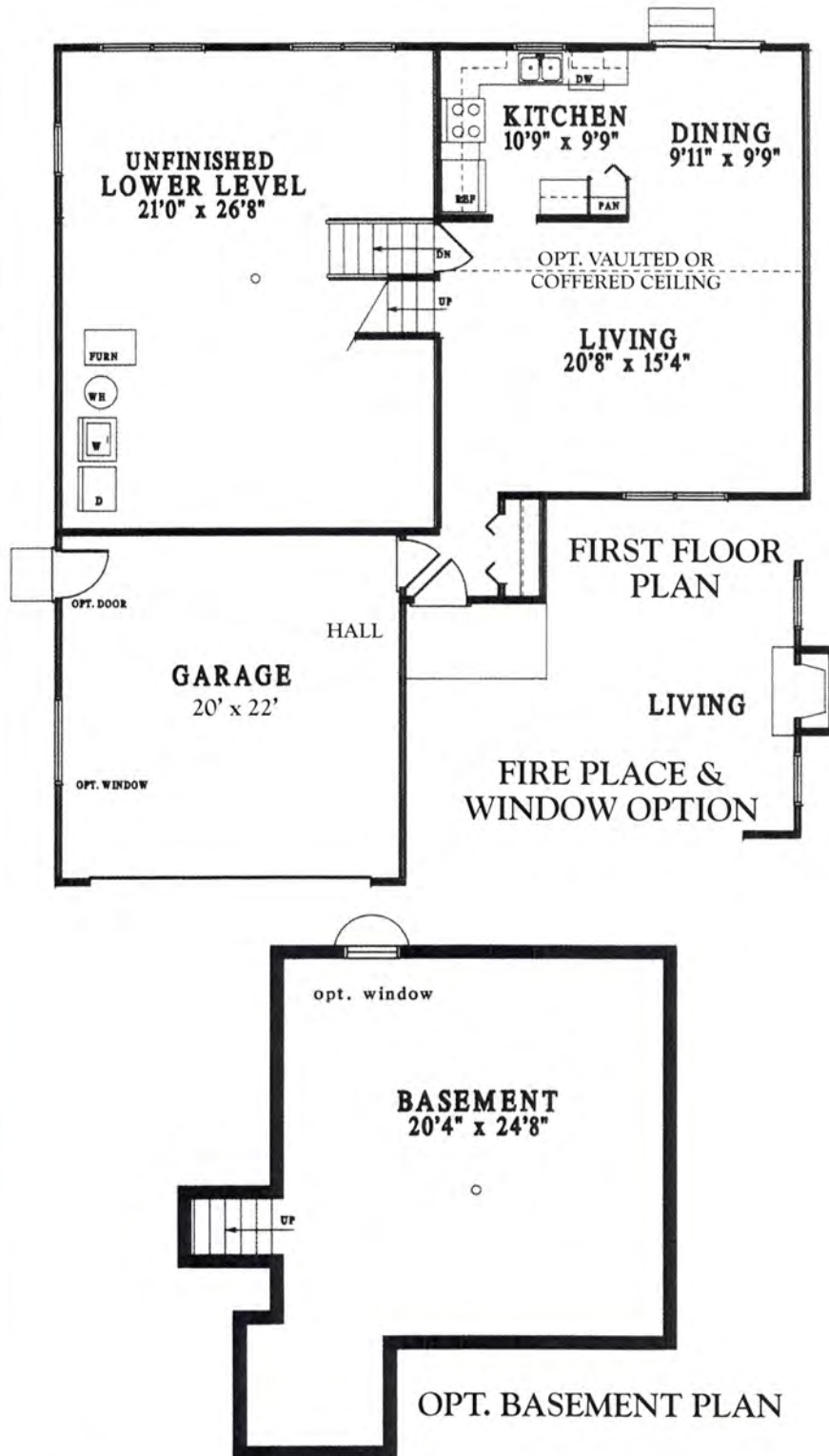


**TRACY  
GROUP**

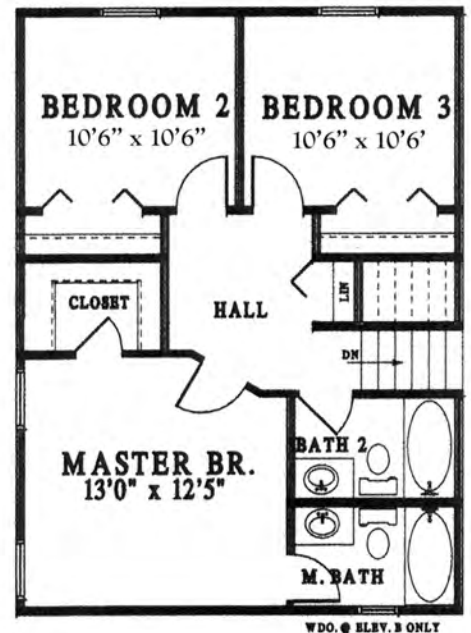
TRACYGROUP.COM  
262-279-9995

**Hampton**

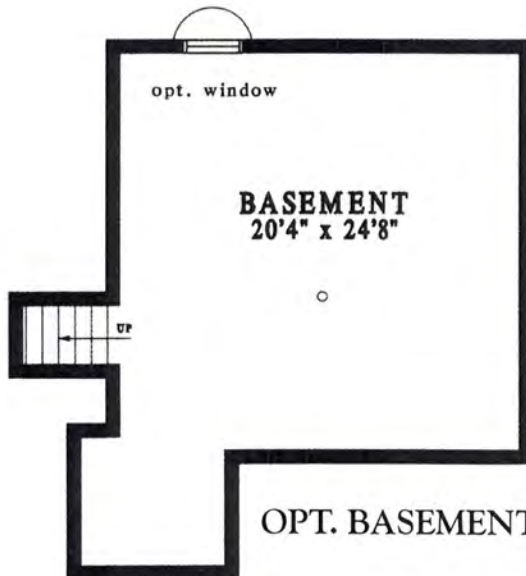
Home Building & Remodeling  
"Since 1974"



**SECOND FLOOR PLAN**



**OPT. BASEMENT PLAN**



Tracy Group's policy of continual attention to detail in design and construction, requires that some revisions may be made by the architect or developer during the process of development. All dimensions are approximate, window sizes and location varies with exterior design and specifications. Dimensions and pricing are subject to change without notice.





ELEVATION A

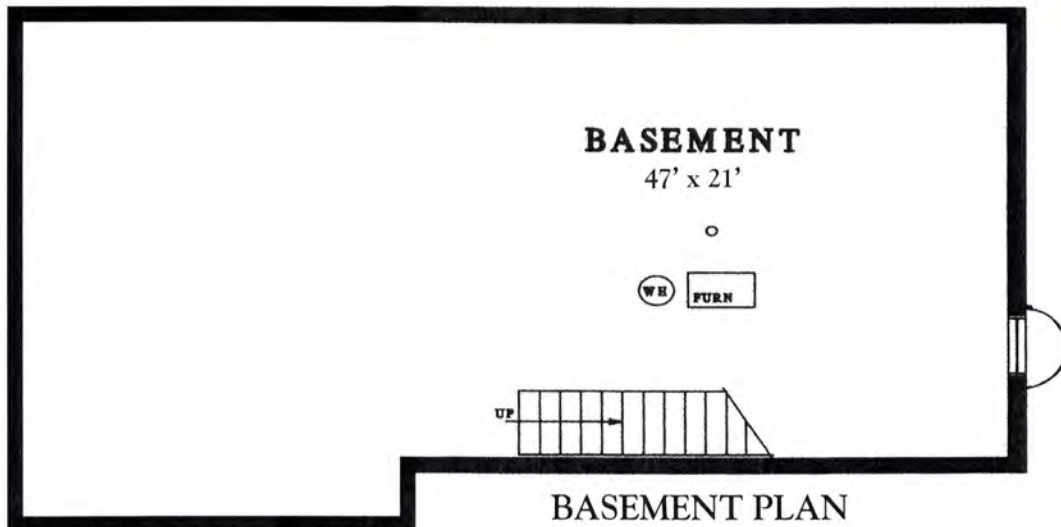
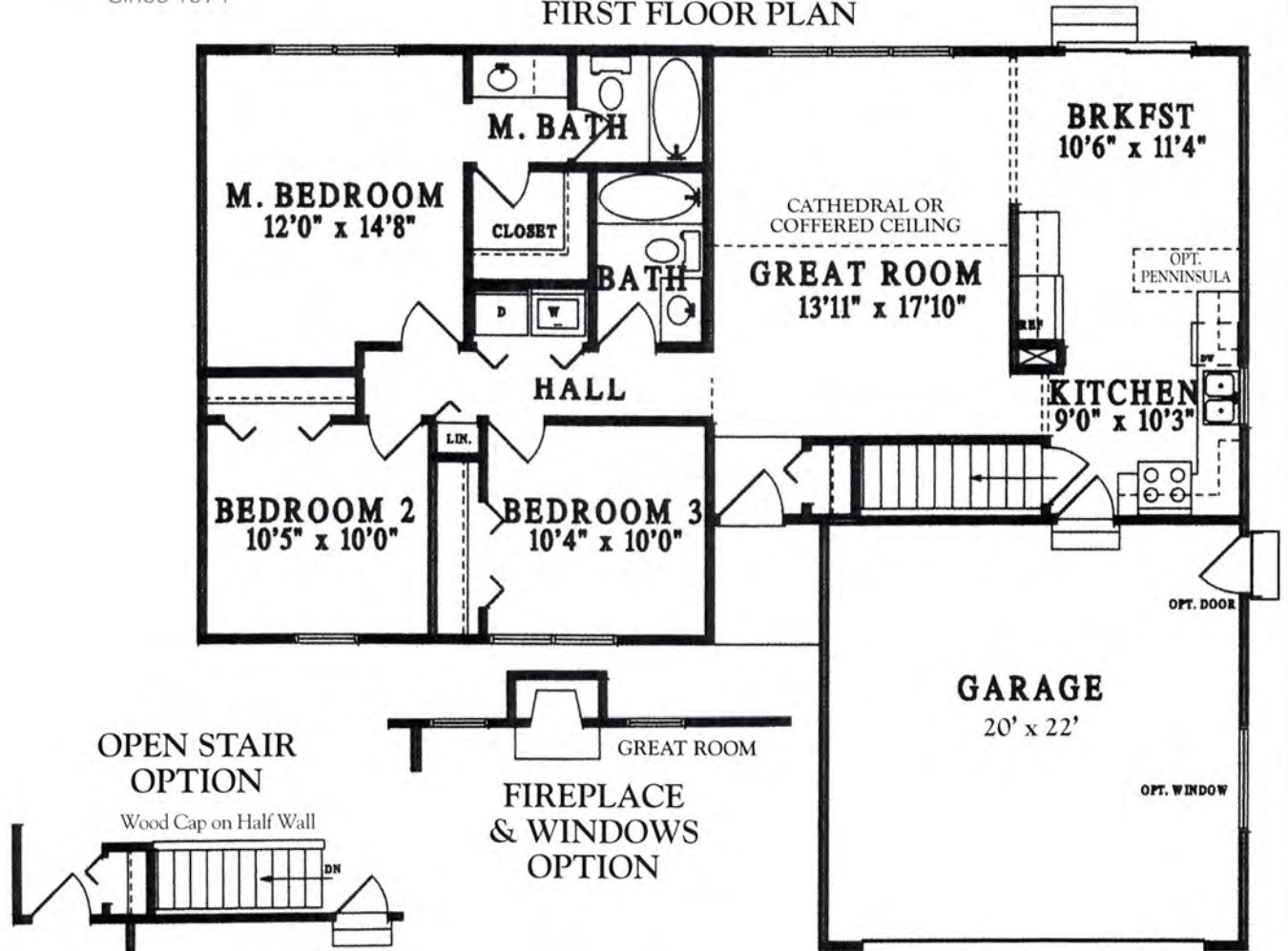


ELEVATION B

*Illustrations of the homes and landscaping are artist's conceptions*

Home Building & Remodeling  
"Since 1974"

**FIRST FLOOR PLAN**



Tracy Group's policy of continual attention to detail in design and construction, requires that some revisions may be made by the architect or developer during the process of development. All dimensions are approximate, window sizes and location varies with exterior design and specifications. Dimensions and pricing are subject to change without notice.



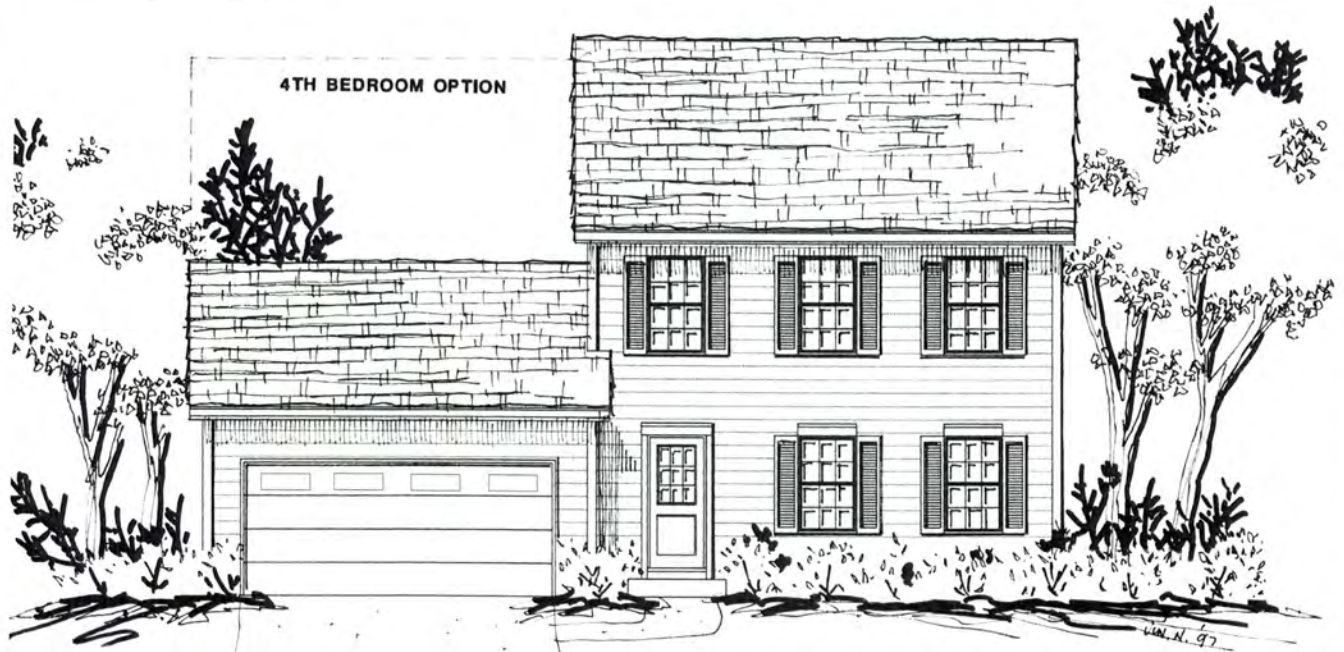


TRACY  
GROUP

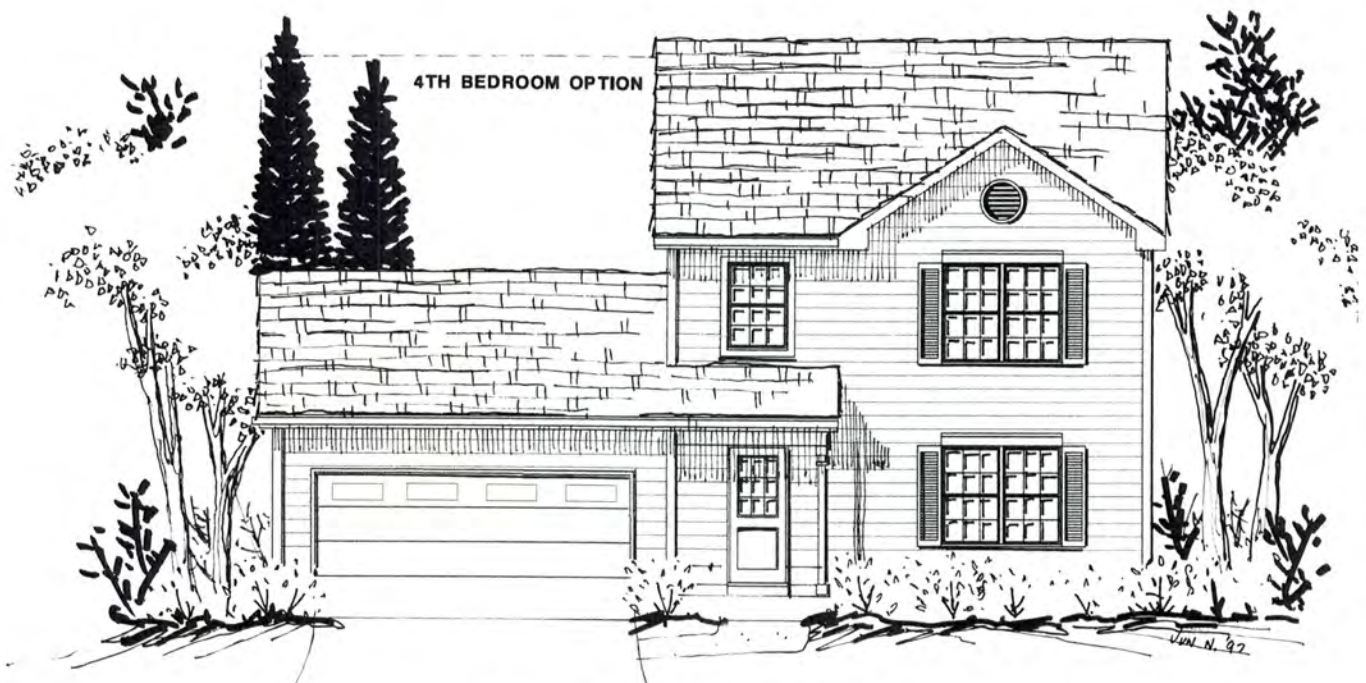
Home Building & Remodeling  
"Since 1974"

Oakmont

1310 Square Foot



ELEVATION A



ELEVATION B

*Illustrations of the homes and landscaping are artist's conceptions*



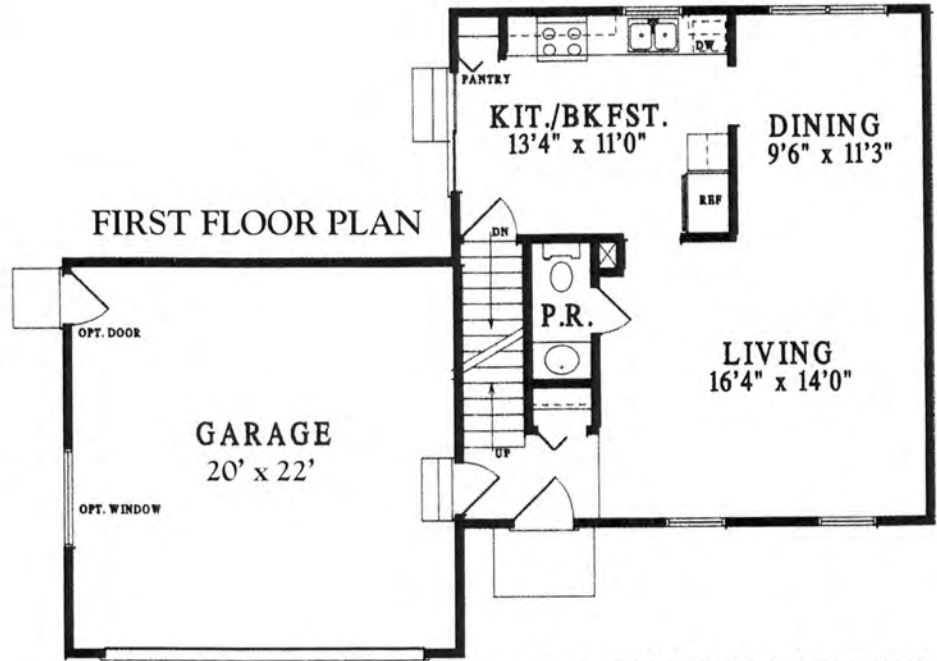
**TRACY  
GROUP**

TRACYGROUP.COM  
262-279-9995

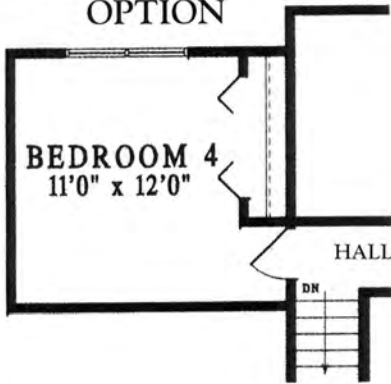
**Oakmont**

Home Building & Remodeling  
"Since 1974"

**FIRST FLOOR PLAN**

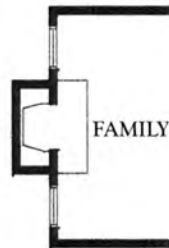


**4TH BEDROOM  
OPTION**

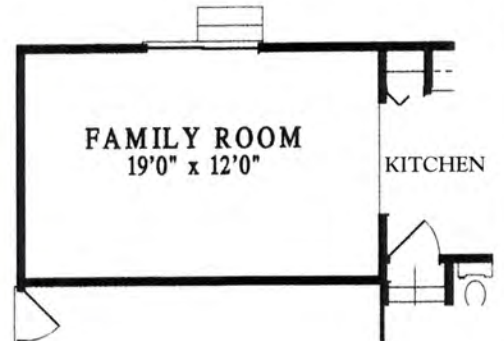


**FAMILY ROOM OPTION**

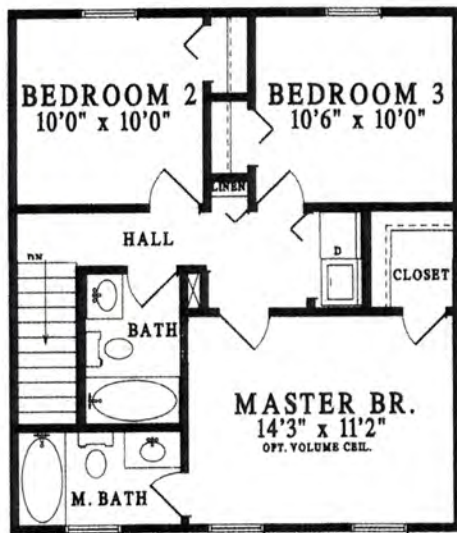
FIREPLACE  
& WINDOWS  
OPTIONS



FAMILY ROOM



**SECOND FLOOR PLAN**



**BASEMENT  
23'0" x 24'8"**



**BASEMENT  
PLAN**

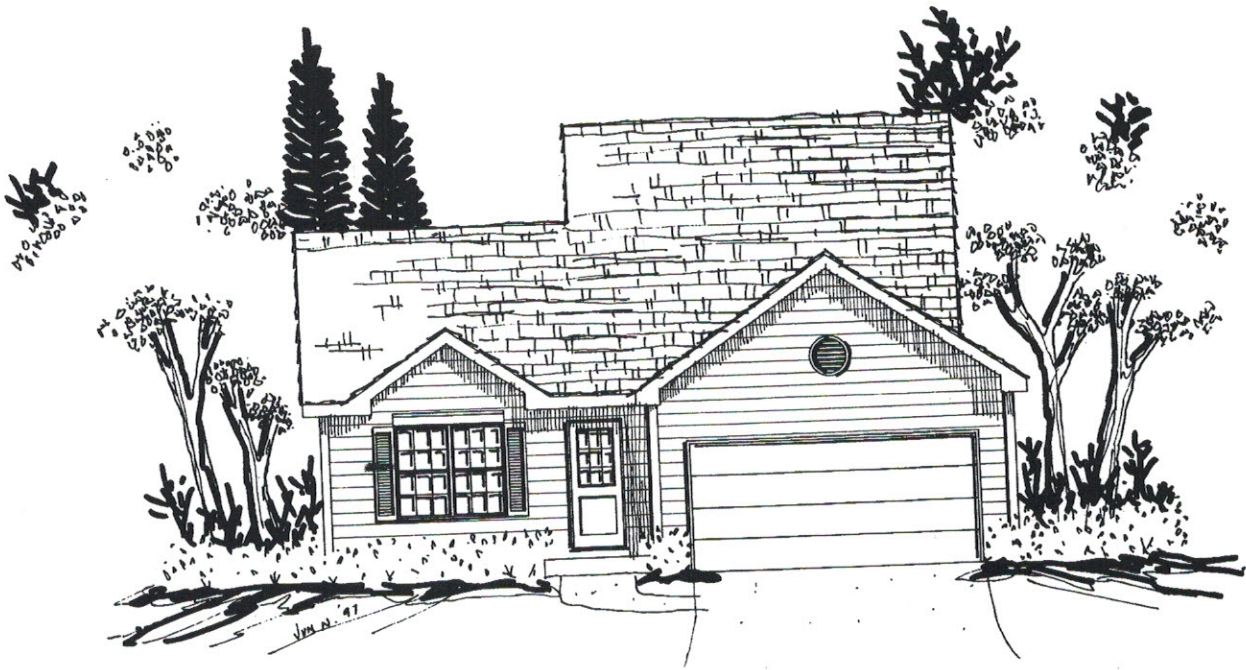
Tracy Group's policy of continual attention to detail in design and construction, requires that some revisions may be made by the architect or developer during the process of development. All dimensions are approximate, window sizes and location varies with exterior design and specifications. Dimensions and pricing are subject to change without notice.



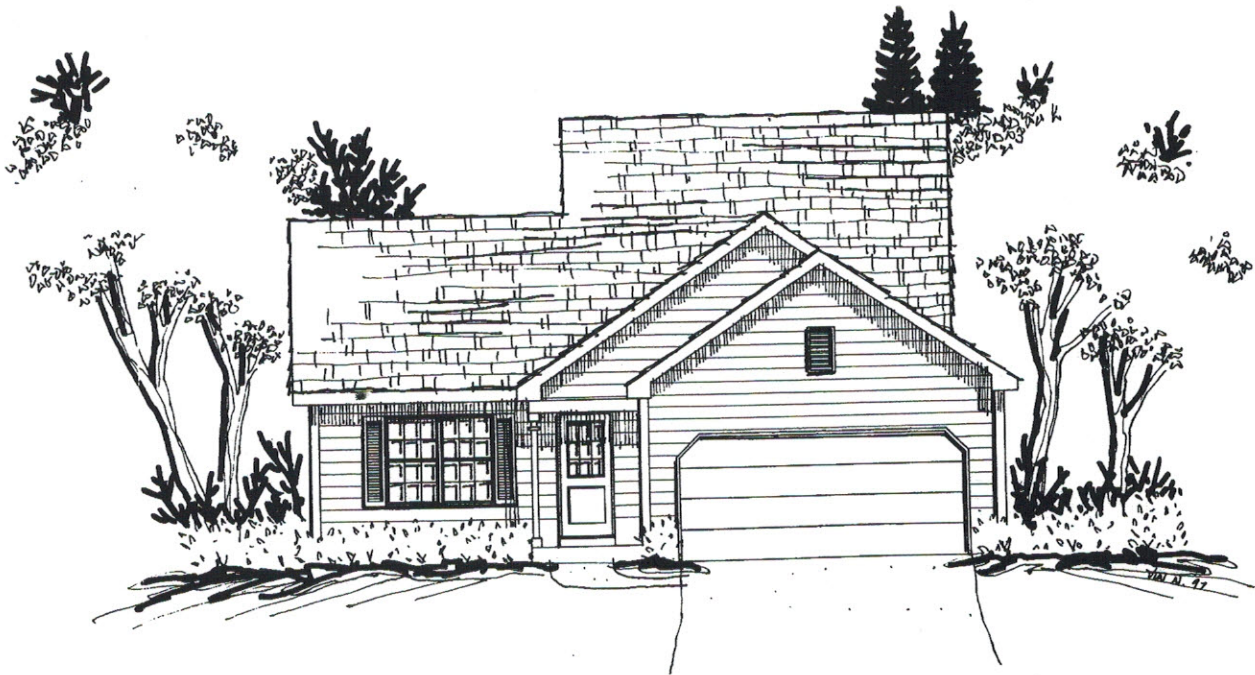


TRACY  
GROUP

# Windsor

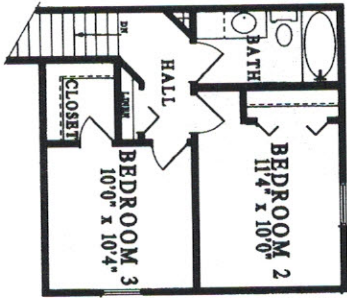


**ELEVATION A**

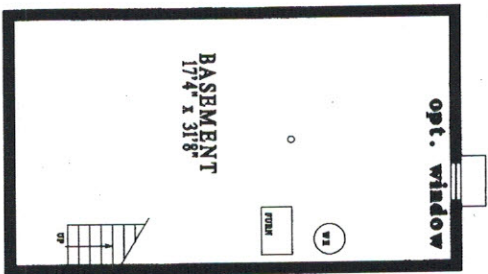


**ELEVATION B**

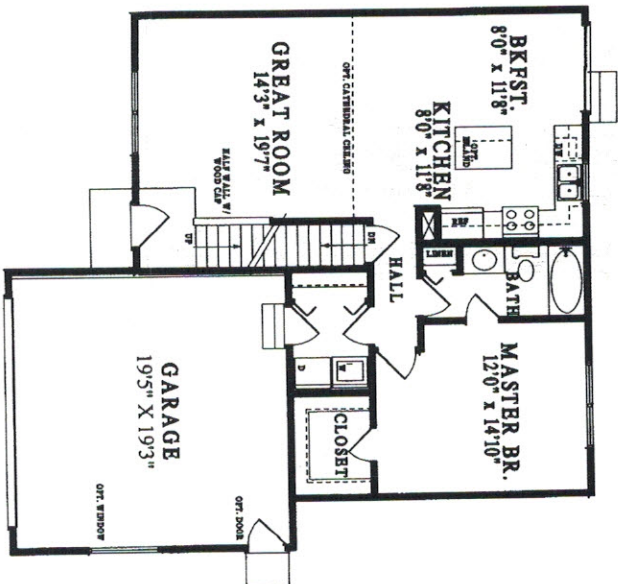
Illustrations of the homes and landscaping are artist's conceptions 3/01



SECOND FLOOR PLAN



BASEMENT PLAN



FIRST FLOOR PLAN



FIREPLACE & WINDOWS  
OPTION



EQUAL HOUSING  
OPPORTUNITY

Tracy Group's policy of continual attention to detail in design and construction, requires that some revisions may be made by the architect or developer during the process of development. All dimensions are approximate, window sizes and location varies with exterior design and specifications. Dimensions and pricing are subject to change without notice.